


RSP-1M4-W

Surge protector for LAN Ethernet networks



- Universal 4-port network surge protector for industrial Ethernet networks in structured cabling systems.
- Mounting on flat surfaces and facility cabinets,
- Discharge element: Gas discharge tubes GDT with TVS diodes (Transient Voltage Suppression Diode)
- Certifications, directives: RoHS, 

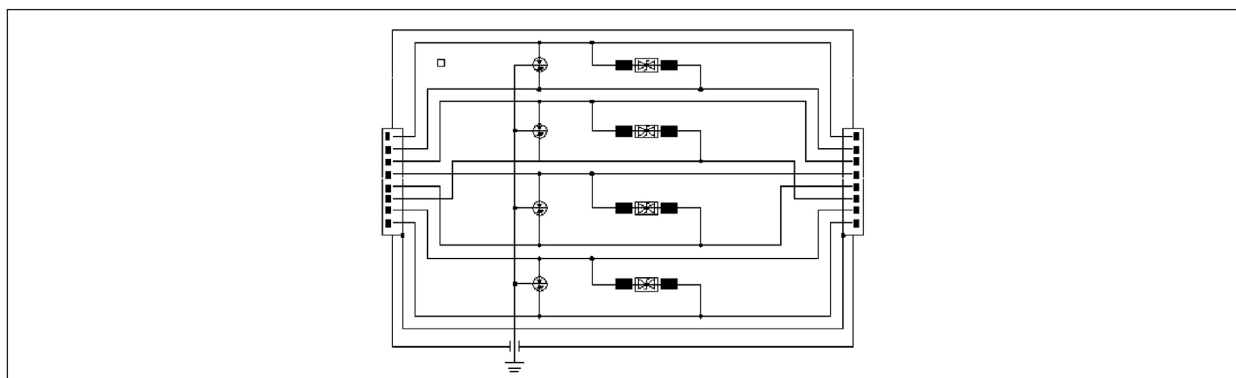
CAT6 Ethernet surge protector is designed for protecting Gigabit Ethernet terminals or RJ45/Ethernet cable system against surges. The unit is fulfilling the requirements of Category 6, can be universally used for all data services with nominal voltages of 5V. It is ideally suited for Gigabit Ethernet such as Industrial Networks and Local Area Networks (LANs), also for Telecom, ATM, ISDN, Voice over IP and similar applications in structured cabling systems according to Class E up to 250 MHz. All lines are protected by powerful 3-pole gas tubes and fast clamping diodes.

- Suitable for CAT5/CAT5E/CAT6/CAT6A cabling system up to 250 MHz.
- High discharge capability, total nominal discharge current 10kA 8/20µs and Lightning current up to 1.0kA.
- EMI Shielded housing, earthing via screw.
- Compatible with EN 50173, ISO/IEC 11801.
- Complied with IEC/EN 61643-21 (D1,C1,C2,C3)

Technical parameters

| | | |
|--|------------|--|
| Discharge current (8/20 µs) | I_n | 2,5 kA |
| Total discharge current (8/20 µs) | I_n | 10 kA |
| Impulse discharge current (10/350 µs) | I_{imp} | 1 kA |
| Safety channel construction | | two stage protection circuit GDT/TVS |
| Nominal voltage | U_n | 5 |
| Max. Continuous operating voltage | U_c | 6 |
| Transmission rate | bps | 10/100/1000 |
| Limit voltage | U_p | @C2 (8/20µs) 55V(L-L); 550V(L-G) @C3 (1KV/µs) 25V(L-L); 500V(L-G) |
| Category of connection | | CAT5/CAT5E/CAT6/CAT6A cabling system up to 250MHz |
| Response time | | ≤ 1ns |
| Insertion lose | | ≤ 3 dB |
| Number of slots RJ45 | | 4 |
| Certification according to standards | | IEC/EN 61643-21 |
| Standards compliance | | EN 50173, ISO/IEC 11801 |
| Dimensions L × W × H / Weight | | 119 × 101 × 27 mm / 445 g |

Basic circuit diagram for one channel RJ45



16.12.2025

1