

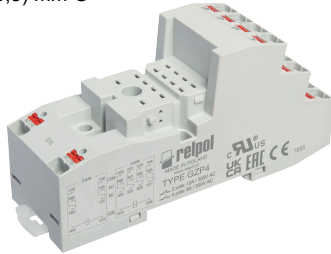
Sockets and accessories

GZP4

For R4N, R2N

Push-in terminals
(flammability class V-0)
Max. cross section of the cables:
2 x 1,5 mm² (ferrules without insulation)
2 x 1 mm² (ferrules with insulation)
Stripping length: 8... 10 mm

35 mm rail mount
acc. to EN 60715
or on panel mounting
97 x 31 x 45,9(75,8) mm ②
Two poles
12 A, 300 V AC
Four poles
8 A, 300 V AC



GZP4-0400



GZT4-0040



G4 1052



MP15



ZGZP4-2



ZGZP-2



Module type M...



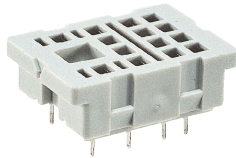
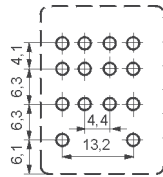
ZGZP4-8



MP15

Accessories ①

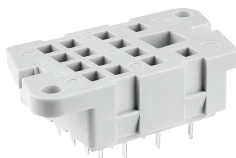
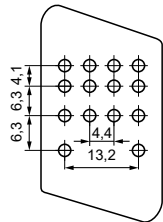
Pinout



G4 1053

Accessories

Pinout

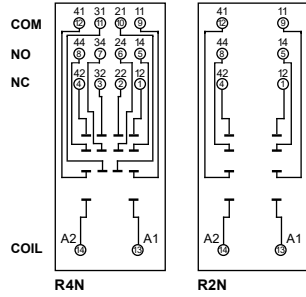


G4 1053

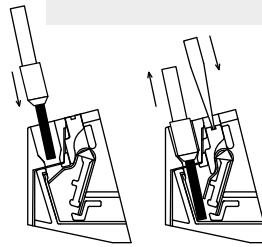
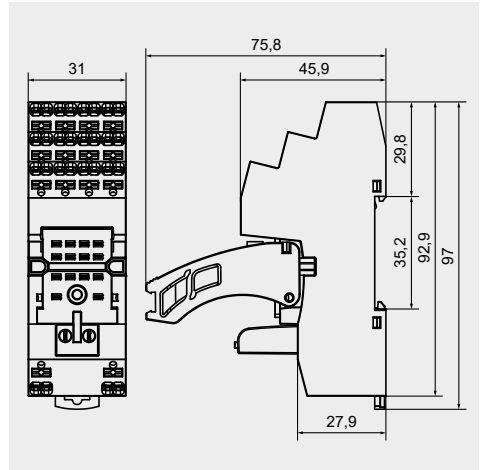
Accessories

① Mounting and sub-assemblies of accessories in the socket; Signalling / protecting modules type M... - see www.repol.com.pl
② In the bracket the height of socket with retainer / retractor clip is shown.

Connection diagrams



Dimensions



The drawings present inserting wire into the Push-in terminal and removing wire using the button releasing a clamp (assembly without tools).

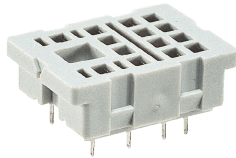
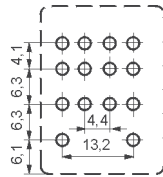
Wire connection

SU4D

For R4N

For PCB
29,6 x 21,5 x 11 mm
Four poles
6 A, 250 V AC

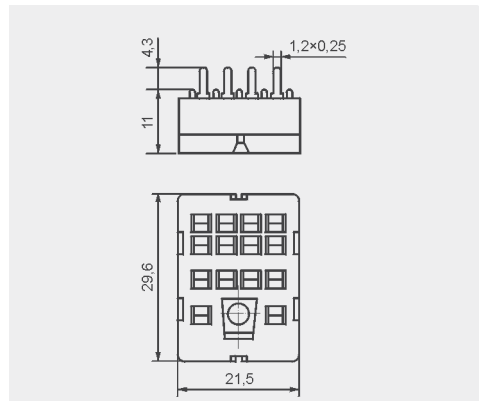
Pinout



G4 1053

Accessories

Dimensions

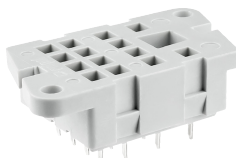
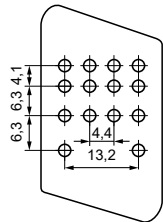


G4D

For R4N

For PCB
40,5 x 21,5 x 11 mm
Four poles
6 A, 250 V AC

Pinout



G4 1053

Accessories

Dimensions

