




# RXC40

## installation contactors



- **Four-pole installation contactors**
- Protection against direct contact IP 20
- AC and DC input voltages
- Cover - modular, width 54 mm
- Direct mounting on 35 mm rail mount acc. to EN 60715
- Applications: in household systems (resistance furnaces, heaters, squirrel-cage motors, motor-loads in domestic)
- Compliance with standard PN-EN 61095
- Recognitions, certifications, directives: RoHS,   

### Output circuit - contact data

Number and type of contacts	4 NO, 3 NO + 1 NC, 2 NO + 2 NC, 4 NC		
Rated operational voltage	400 V AC		
Rated operational current	AC1 / AC7a	40 A	
	AC3 / AC7b	15 A	
Rated thermal current	40 A		
Insulation rated voltage	500 V AC		
Operational power	AC1 / AC7a	9 kW 230 V AC	16 kW 400 V AC
	AC3 / AC7b	3,5 kW 230 V AC	6 kW 400 V AC
<b>Input circuit - coil data</b>			
Control voltage	50/60 Hz AC	24, 230 V	
	DC	24 V	
Release voltage	0,2...0,75 U <sub>s</sub>		
Range of control voltage	0,85...1,1 U <sub>s</sub> (under operating conditions)		
Maximum power	2,1 W 24, 230 V AC		
<b>General data</b>			
Electrical life (cycles)	10 <sup>5</sup>		
Mechanical life (cycles)	> 10 <sup>6</sup>		
Rated working system	• intermittent working system		
	30 times/h load factor 40%		
Dimensions (L x W x H)	85 <sup>①</sup> x 54 x 67 mm		
Weight	330 g		
Ambient temperature	• operating	-5...+60 °C (non-condensation and/or icing)	
Cover protection category	IP 20 EN 60529		
Relative humidity	≤ 50% 40 °C		≤ 90% 20 °C <sup>②</sup>
Operating altitude	0...2 000 m		
Overvoltage category	II		
Insulation pollution degree	2		

<sup>①</sup> Length with 35 mm rail catch: 90 mm. <sup>②</sup> Special measures shall be taken for occasional condensation due to temperature changes.

**Table of codes**

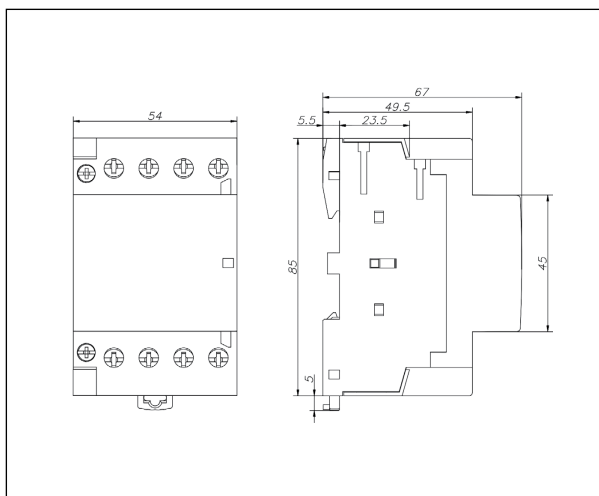
Table 1

Contact code	Configuration of contacts	Control coil voltage
RXC40-40-A024	4 NO	24 V AC 50/60 Hz
RXC40-31-A024	3 NO + 1 NC	24 V AC 50/60 Hz
RXC40-22-A024	2 NO + 2 NC	24 V AC 50/60 Hz
RXC40-04-A024	4 NC	24 V AC 50/60 Hz
RXC40-40-A230	4 NO	230 V AC 50/60 Hz
RXC40-31-A230	3 NO + 1 NC	230 V AC 50/60 Hz
RXC40-22-A230	2 NO + 2 NC	230 V AC 50/60 Hz
RXC40-04-A230	4 NC	230 V AC 50/60 Hz
RXC40-40-D024	4 NO	24 V DC
RXC40-31-D024	3 NO + 1 NC	24 V DC
RXC40-22-D024	2 NO + 2 NC	24 V DC
RXC40-04-D024	4 NC	24 V DC

# RXC40

## installation contactors

### Dimensions



### Mounting, accessories for contactors

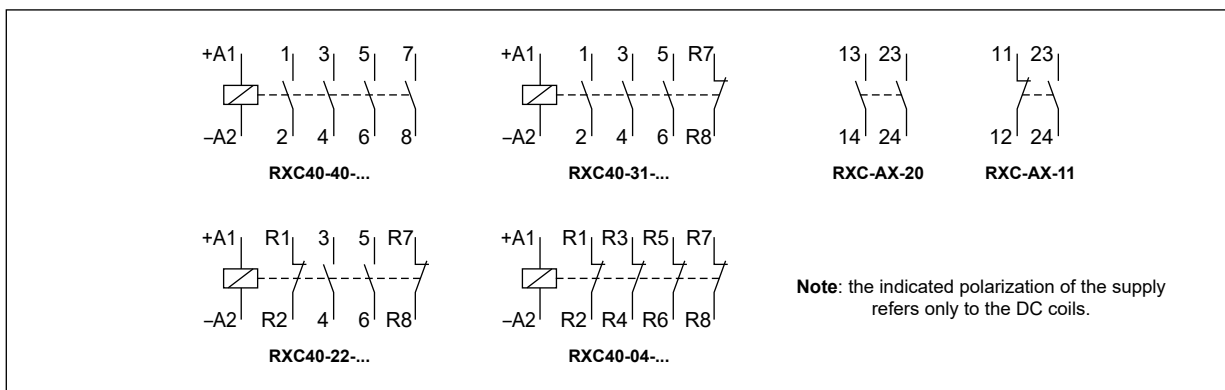
Installation contactors **RXC40** are designed for direct mounting on 35 mm rail mount acc. to EN 60715 Ⓢ - they are delivered ready to install. Operational position - shall be vertical, and the inclination in each direction shall not exceed  $\pm 5^\circ$  (there shall be no significant shock and vibration). **Connections:** conductor cross section: input  $2 \times 1,5 \text{ mm}^2 / 2 \times 2,5 \text{ mm}^2$  (hard wire / flexible cord), output  $6...25 \text{ mm}^2 / 6...16 \text{ mm}^2$  (hard wire / flexible cord), input terminals: 2 screws M3,5, max. tightening moment for the terminal: 0,8 Nm, output terminals: 8 screws M5, max. tightening moment for the terminal: 3,5 Nm. For **RXC40** contactors we offer additional auxiliary contacts **RXC-AX** (mounted on the side of the contactor, increase the width by 9 mm).

Ⓢ The distance at least 6 mm between the contactors mounted side by side.

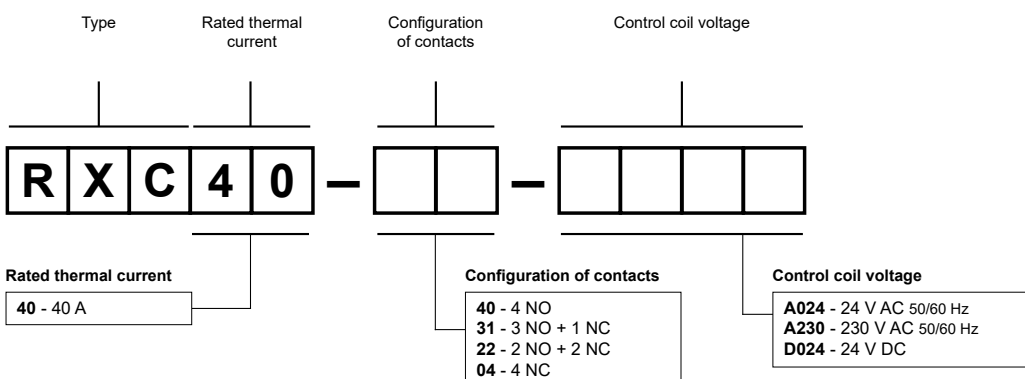


**RXC-AX**

### Connection diagrams



### Ordering codes



Examples of ordering codes Ⓢ:

**RXC40-22-D024**

contactor **RXC40-...**, rated thermal current 40 A, four-pole - contacts 2 NO + 2 NC, control coil voltage 24 V DC

**RXC40-04-A230**

contactor **RXC40-...**, rated thermal current 40 A, four-pole - contacts 4 NC, control coil voltage 230 V AC 50/60 Hz

Ⓢ Ordering codes **RXC40-...** are specified in Table 1, "Contactor code" column.